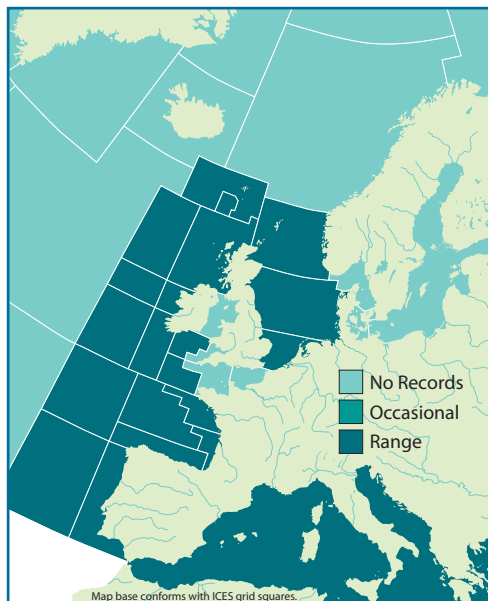


### SCIENTIFIC NAME

*Dalatias licha* (Bonnaterra, 1788).

### DISTRIBUTION

Patchy distribution worldwide. East Atlantic from Scotland to Cameroon, including the western Mediterranean<sup>iii</sup>.



### COMMON NAME

**KITEFIN SHARK**, Black Shark, Darkie Charlie, Seal Shark, Squale Liche (Fr) Carrocho (Es).

### IDENTIFICATION

- 1 Short, blunt snout with thick lips.
- 2 Dorsal fins almost equal in size with no spines.
- 3 No anal fin<sup>iii</sup>.

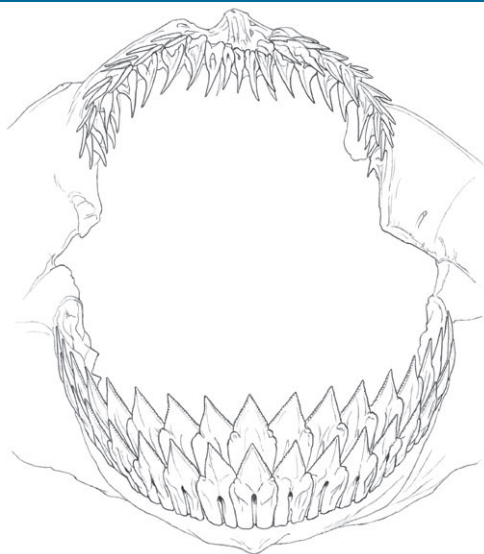
### COLOUR

- Greyish black to red brown.
- Poorly defined black spots on back.
- Fin margins white or translucent. Black tipped caudal fin<sup>i</sup>.

### BIOLOGY AND SIZE

- Born: 30cm. Mature: 117–159cm ♀, 77–121cm ♂. Max TL: 180cm<sup>i</sup>.
- Feed predominately on bony fish, along with squid, crustaceans and chondrichthyans<sup>v</sup>.
- Large, pelagic fish such as tuna and bonito recorded from stomachs contents, presumably scavenged<sup>iii</sup>.

## TEETH



- Triangular, serrated lower teeth.
- Slender, awl shaped upper teeth sloping toward the corners of the mouth<sup>ii</sup>.



## HABITAT

- 37–1,800m. Most common below 200m.
- Usually demersal but often caught in the water column.
- Does not appear to form schools or aggregations<sup>i</sup>.

## CONSERVATION STATUS

- Extremely vulnerable to fishing pressure<sup>iv</sup>. When targeted by an industrial fleet in the Azores, landings declined by 98% in 7 years<sup>vi</sup>.
- Red List status:** Near Threatened (2008). Vulnerable in the northeast Atlantic.

## COMMERCIAL IMPORTANCE

- Targeted for its liver oil throughout its range, particularly by Japan and South Africa.
- Primarily used for fishmeal in the East Atlantic.
- No commercial interest in the West Atlantic<sup>i</sup>.
- 2010 – Subject to a zero TAC in EU waters.

## HANDLING

- Handle with care.
- Sharp teeth.
- Abrasive skin.

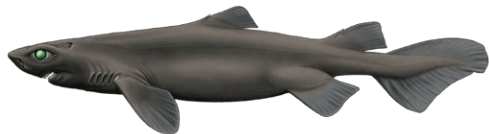
## REFERENCES

- Bester, C. *et al*; Unknown. FLMNH.
- Bigelow, H. B. *et al*; 1953. US Government Printing Office.
- Compagno, L. J. V.; 1984. FAO.
- Compagno, L. J. V. *et al*; 2008. IUCN Red List.
- Cortés, E.; 1999. *ICES JMS*.
- Perrotta, R. G.; 2004. *Rev. Invest. Desarr. Pesq.*

## SIMILAR SPECIES



- Dalatias licha*, **Kitefin Shark**



- Scymnodon ringens*, **Knifetooth Shark**



- Centroscymnus coelolepis*, **Portuguese Dogfish**



- Zameus squamulosus*, **Velvet Dogfish**